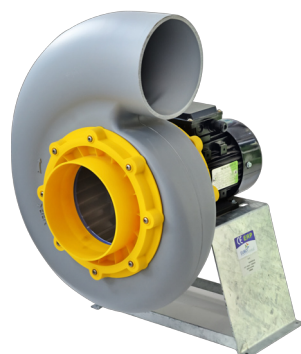


CCF

CCF : Centrifugal anti-corrosive single-inlet fans made from polypropylene.



Aesthetic and modern design

Fan:

- Polypropylene casing
- Impeller with forward-facing blades made from polypropylene

Motor:

- Motors with IE-2 efficiency, except for motors with lower powers than 0.75 kW and single-phase motors.
- Class F motors, with bearings, IP55 protection.
- Three-phase 230/400V.-50Hz. (up to 5.5CV.) and 400/690V.-50Hz. (power over 5.5CV.)
- Max. air temperature to transport: -20°C + 70°C

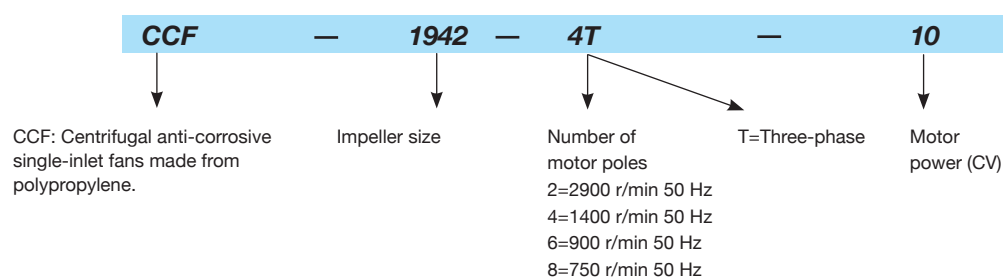
Finish:

- Plastic anticorrosive

On request:

- Special windings for different voltages
- ATEX certification, Category 3

Order code



Technical characteristics

Model	Speed (r/min)	Maximum admissible current (A)			Installed power (kW)	Maximum airflow (m³/h)	Sound pressure level dB(A)	Approx. weight (Kg)
		230V	400V	690V				
CCF-815-2T	2710	1.92	1.11		0.37	950	75	14.0
CCF-815-4T	1350	1.52	0.88		0.25	450	58	14.0
CCF-1020-2T	2770	2.78	1.60		0.75	2000	81	19.5
CCF-1020-4T	1350	1.52	0.88		0.25	1250	65	19.5
CCF-1020-6T	900	1.51	0.87		0.25	750	53	19.5
CCF-1325-2T	2885	7.77	4.47		2.20	3250	87	27.0
CCF-1325-4T	1370	2.02	1.17		0.37	2300	69	27.0
CCF-1325-6T	900	1.51	0.87		0.25	1400	59	27.0
CCF-1630-4T	1430	5.96	3.44		1.50	4500	75	34.5
CCF-1630-6T	900	2.99	1.73		0.55	2700	63	34.5
CCF-1840-4T	1445	10.96	6.33		3.00	6000	70	48.0
CCF-1840-6T	945	4.88	2.82		1.10	4200	65	42.0
*CCF-1942-4T-7.5	1440		11.60	6.72	5.50	8500	79	66.0
*CCF-1942-4T-10	1455		14.20	8.20	7.50	10500	84	77.0
*CCF-1942-6T	955	9.30	5.30		2.20	7000	75	49.0
*CCF-1942-8T	705	7.10	4.10		1.50	5500	70	56.0
CCF-2045-4T	1455		14.20	8.20	7.50	10400	78	102.0
CCF-2045-6T	960	12.70	7.30		3.00	7000	72	88.0
CCF-1335-2T	2880		10.50	6.09	5.50	4700	84	91.0
CCF-1160-4T	1460		20.20	11.60	11.00	8000	83	243.0
CCF-2060-4T	1460		20.20	11.60	11.00	12000	81	245.0
CCF-2160-4T	1460		27.50	15.90	15.00	15500	77	282.0
*CCF-720-2T	2710	1.92	1.11		0.37	525	75	10.0
*CCF-825-2T	2860	4.20	2.40		1.10	1140	79	17.0
*CCF-930-2T	2885	7.77	4.47		2.20	1750	84	24.0

*Only LG position allowed

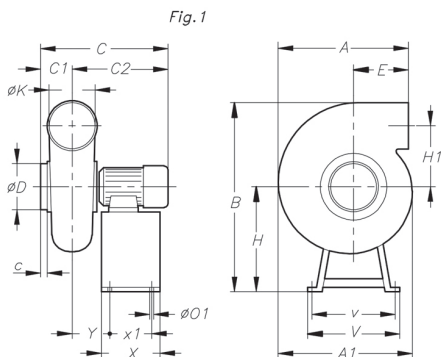
Acoustic features

Sound power Lw(A) spectrum in dB(A) via frequency band in Hz.

Model	63	125	250	500	1000	2000	4000	8000	Model	63	125	250	500	1000	2000	4000	8000
CCF-815-2	56	69	77	81	81	77	73	65	CCF-1942-4-10	80	90	92	95	94	94	92	83
CCF-815-4	39	52	60	64	64	60	56	48	CCF-1942-6	71	81	83	86	85	85	83	74
CCF-1020-2	62	75	83	87	87	83	79	71	CCF-1942-8	66	76	78	81	80	80	78	69
CCF-1020-4	46	59	67	71	71	67	63	55	CCF-2045-4	63	76	84	88	89	85	81	72
CCF-1020-6	34	47	55	59	59	55	51	43	CCF-2045-6	57	70	78	82	83	79	75	66
CCF-1325-2	70	83	91	95	96	92	88	79	CCF-1335	67	80	88	92	93	89	85	76
CCF-1325-4	52	65	73	77	78	74	70	61	CCF-1160	68	81	89	93	94	90	86	77
CCF-1325-6	42	55	63	67	68	64	60	51	CCF-2060	66	79	87	91	92	88	84	75
CCF-1630-4	60	73	81	85	86	82	78	69	CCF-2160	64	77	85	89	89	85	81	73
CCF-1630-6	48	61	69	73	74	70	66	57	CCF-720	56	69	77	81	81	77	73	65
CCF-1840-4	55	68	76	80	81	77	73	64	CCF-825	60	73	81	85	85	81	77	69
CCF-1840-6	50	63	71	75	76	72	68	59	CCF-930	65	78	86	90	90	86	82	74
CCF-1942-4-7,5	75	85	87	90	89	89	87	78									

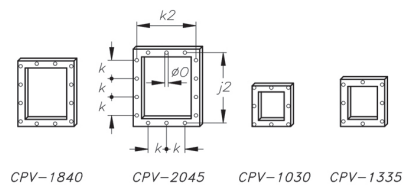
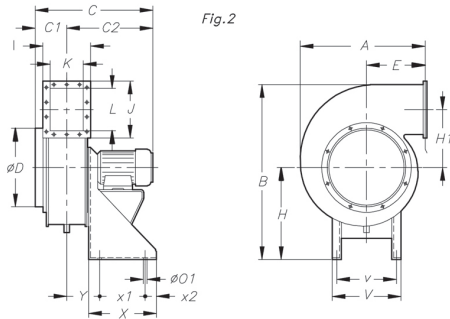
Dimensions in mm

CCF-720...1942



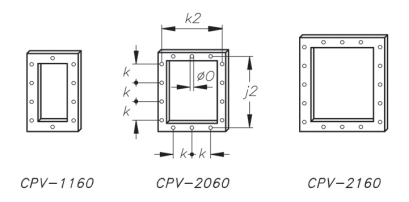
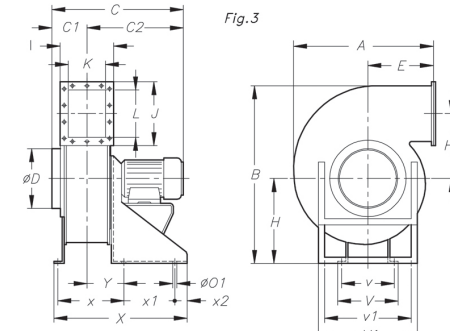
Model	Fig.	A	A1	B	C	C1	C2	c	øD	E	H	H1	øK	øO1	V	v	X	x1	Y
CCF-720	1	375	-	456	350	80	270	45	90	212	281	130	90	8	355	335	180	160	92
CCF-815	1	303	335	521	360	100	260	30	125	100	281	177,5	125	8	355	335	180	160	90
CCF-825	1	445	-	522	433	110	323	55	125	218	290	170	125	8	355	335	180	160	103
CCF-930	1	540	-	658	477	100	377	40	160	262	370	205	160	8	400	380	180	160	117
CCF-1020-2T	1	340	397	593	445,5	116	329,5	32	160	100	290	223	160	8	355	335	180	160	127,5
CCF-1020-4/6T	1	340	397	584	422,5	116	306,5	32	160	100	281	223	160	8	355	335	180	160	122,5
CCF-1325-2T	1	413	505	735	494	130	364	35	200	103	370	265	200	8	400	380	180	160	125
CCF-1325-4/6T	1	413	505	716	432,5	130	302,5	35	200	103	351	265	200	8	400	380	180	160	113,5
CCF-1630-4T	1	490	602	890	536,5	145	391,5	35	250	117	440	323	250	8	450	430	240	220	142,5
CCF-1630-6T	1	490	602	880	503	145	358	35	250	117	430	323	250	8	450	430	240	220	138
CCF-1942-4T	1	580	750	1170	730,5	210	520,5	60	315	130	600	412,5	315	8	600	564	350	314	181,5
CCF-1942-6/8T	1	580	750	1150	679,5	210	469,5	60	315	130	580	412,5	315	8	600	564	350	314	204

CCF-1030...2045



Model	Fig.	A	B	C	C1	C2	øD	E	H	H1	I	J	J2	øK	k	k2	L	øO	øO1	V	v	X	x1	x2	Y
CCF-1335	2	566	788	-	175	-	225	255	452	246	240	256	226	160	100	210	180	9	12	320	285	-	200	50	140
CCF-1840-4T	2	628	819	660	210	450	355	275	420	259	305	356	326	225	100	275	280	9	12	320	285	300	200	50	170
CCF-1840-6T	2	628	809	630	210	420	355	275	410	259	305	356	326	225	100	275	280	9	12	320	285	300	200	50	170
CCF-2045	2	724	1020	810	245	565	400	300	542	310	362	421	381	270	100	322	335	9	12	350	315	350	250	50	197

CCF-1160...2160



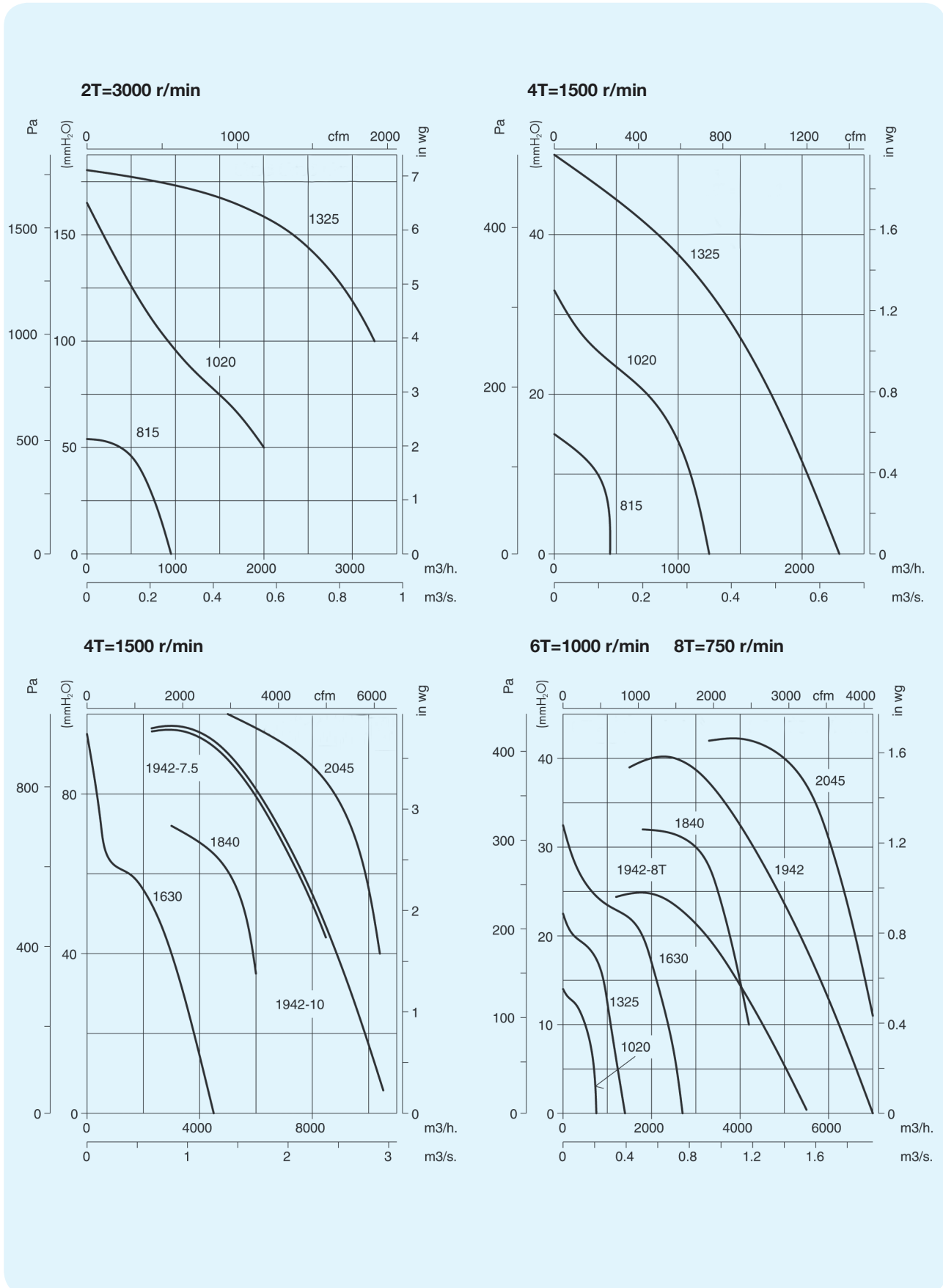
Model	Fig.	A	B	C	C1	C2	øD	E	H	H1	I	J	J2	øK	k	k2	L	øO	øO1	V	V1	v	v1	X	x	x1	x2	Y
CCF-1160	3	937	1276	-	210	-	355	410	700	421	275	416	366	155	100	225	310	9	14	500	790	450	670	710	265	360	60	155
CCF-2060	3	937	1276	-	270	-	400	410	700	421	395	416	366	275	100	345	310	9	14	500	790	450	670	855	410	360	60	215
CCF-2160	3	981	1336	-	285	-	600	414	700	438,5	455	501	451	335	100	405	395	9	14	500	790	450	670	915	470	360	60	240



Characteristic curves

Q = Airflow in m³/h, m³/s and cfm.

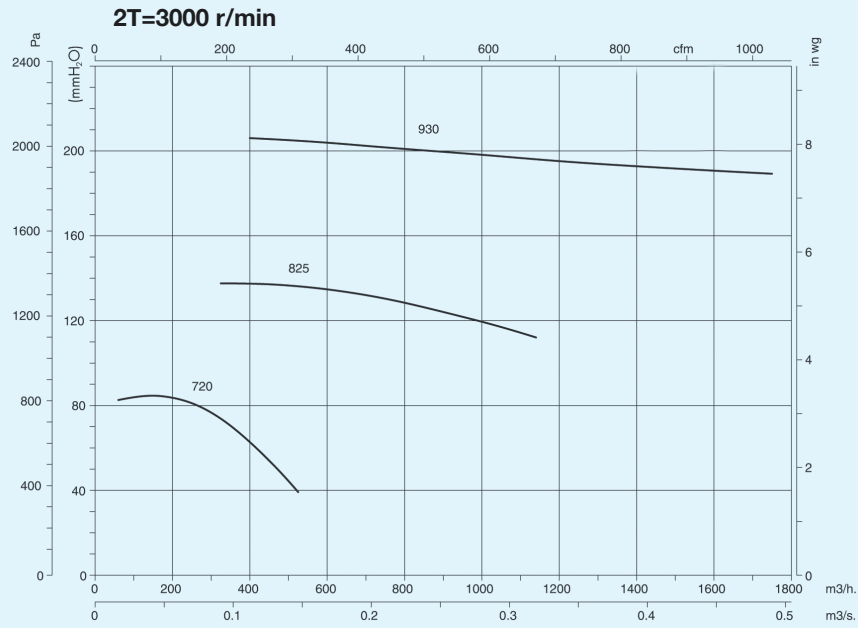
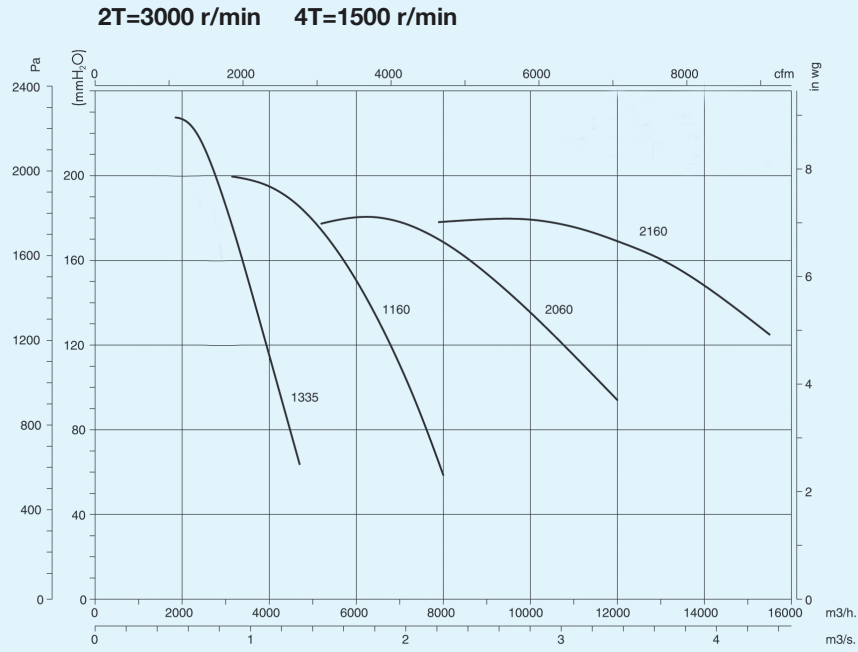
Pe = Static pressure in mm.w.c., Pa and inwg.



Characteristic curves

Q = Airflow in m³/h, m³/s and cfm.

Pe= Static pressure in mm.w.c., Pa and inwg.



Positions

LG 90 standard supply

