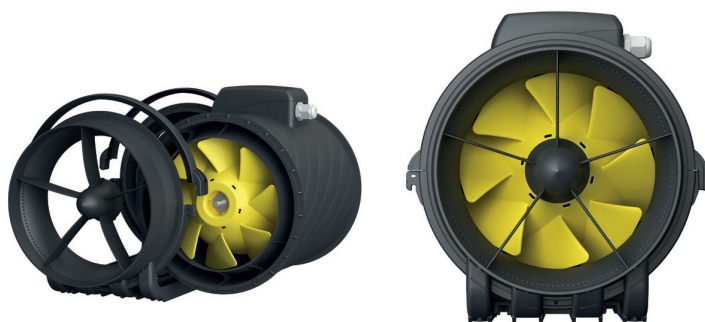


EM-SILENT Developed edition

- VERY SILENT VERY POWERFUL
- GERMAN TECHNOLOGY



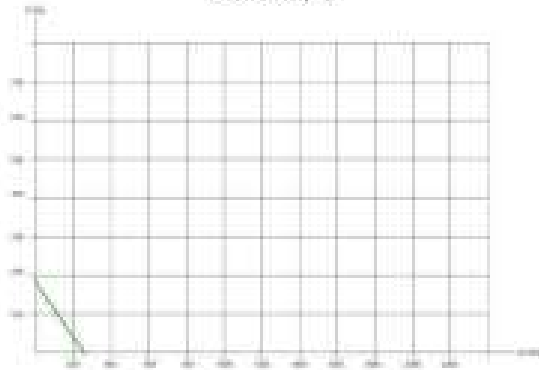
- The fan has been developed from its previous version technologies in terms of strength and thickness of the outer body and the blade.
- The latest German technology with completely new specifications.
- Comes with 4 y ears warranty.
- It has certificate of conformity of European standards (CE) and Gulf (G MARK).
- Built from composite materials which allow withstanding the outside temperature up to. Comes in the form of low operating noise, two operating speeds.
- Low power consumption.
- It's not applicable for kitchen exhaust High static pressure allows for long ducting routes.

Type	U _N V	f _N Hz	I _{max.}	P _N W	v cfm / m ³ /h	RPM	Noise level (dBA)	A*B*C*D
EM 100L E2 01 silent (4")	230V ~	50	0,2	25	147 / 250	2500	40	371*173*216*99
EM 125L E2 01 silent (5")	230V ~	50	0,3	29	209 / 355	2450	39	291*173*216*124
EM 160L E2 01 silent (6")	230V ~	50	0,3	50	335 / 570	2600	49	340*190*238*159
EM 200 E2 01 silent (8")	230V ~	50	0,6	105	647 / 1100	2600	58	376*250*265*198.5
EM 250 E2 01 silent (10")	230V ~	50	0,8	180	917 / 1560	2550	60	450*290*323*250
EM 315 E2 01 silent (12")	230V ~	50	2,1	285	1211 / 2060	2350	69	445*324*420*312

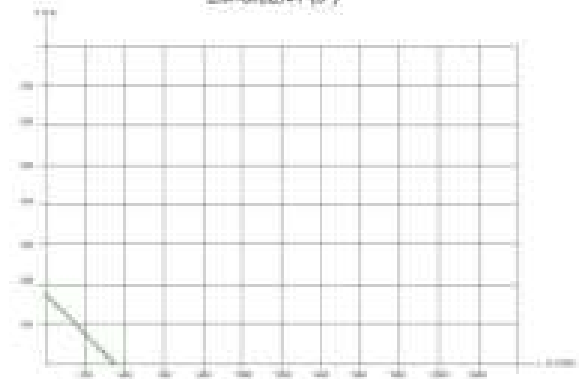


- Variable installation in horizontal or vertical position
- Direct in-line installation
- Integrated mounting bracket for easy fan installation
- By releasing the mounting brackets, the wiring box can be oriented to best suit the application

EM-SILENT (4")



EM-SILENT (5")



EM-SILENT (6")



EM-SILENT (8")

